

For Sale

GREENSTREET
COMMERCIAL REAL ESTATE



FLOORPLAN

INVESTMENT OPPORTUNITY

1917 Welsh Road, Philadelphia, PA 19115

Property Type

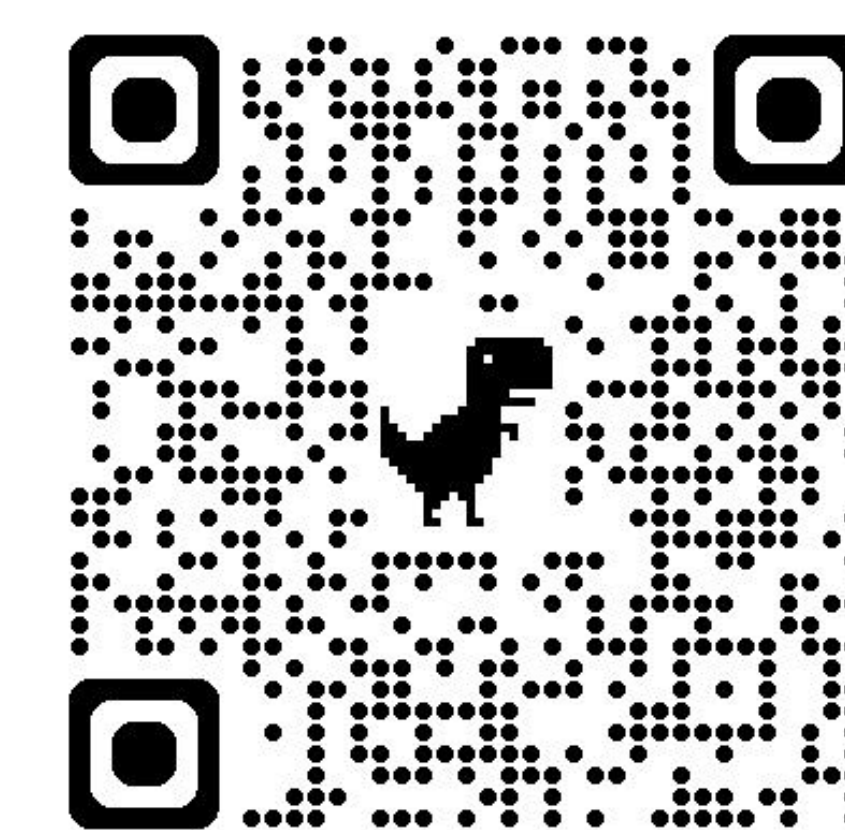
- **MIXED USE**
- **OFFICE**
- **RETAIL**

Square Footage

- **11,200 +/-**

OVERVIEW

Features two distinct buildings, offering versatility and endless possibilities for your business needs.



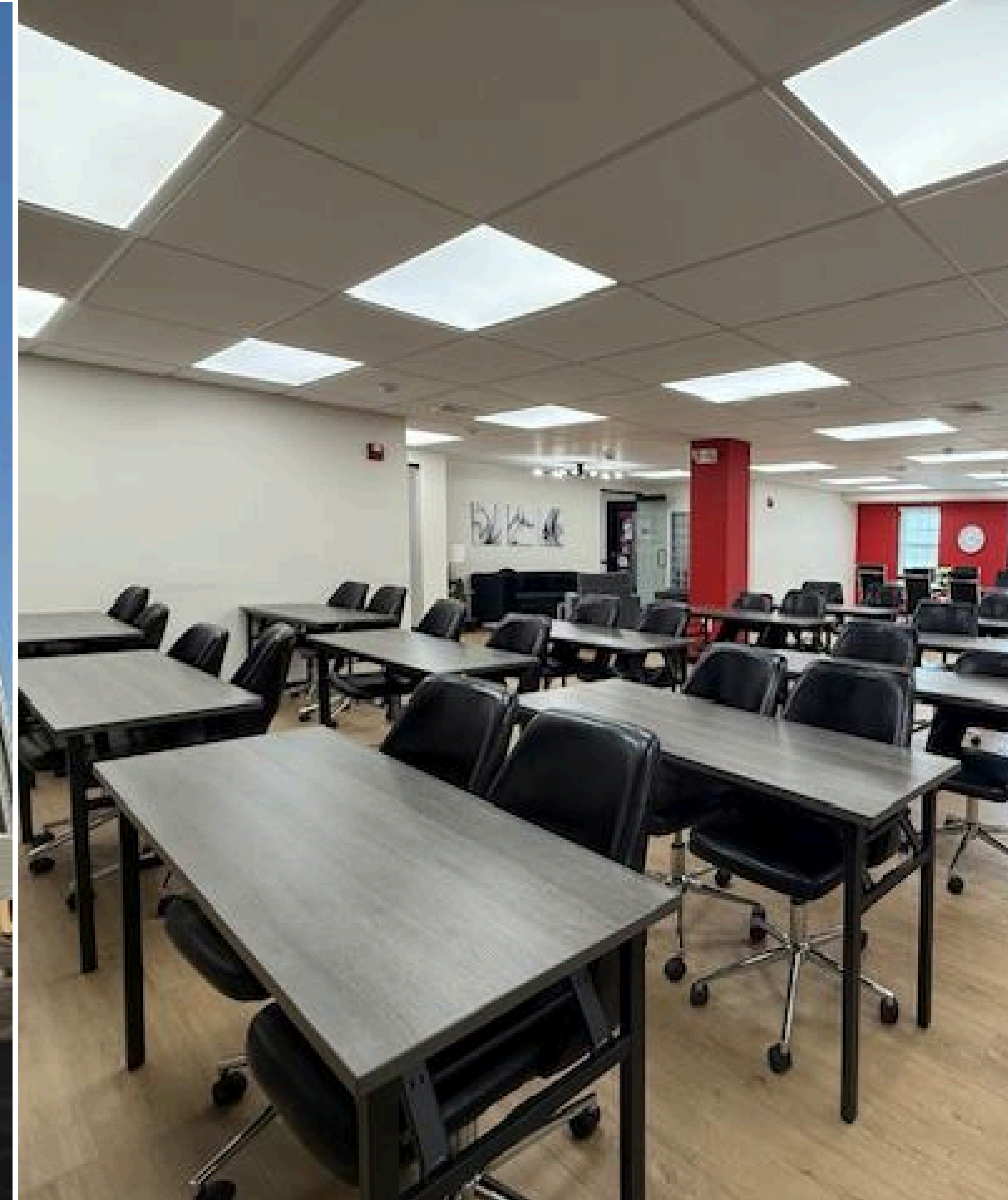
@greenstreetpa
info@greenstreetpa.com

PRESENTED BY:

Kylie Miller Bufty
Green Street Real Estate

215.383.0117

GREENSTREETPA.COM



MORE INFO

Exciting Investment Opportunity

Property features two distinct buildings, offering versatility and endless possibilities for your business needs.

The 3-story front office building spans a generous 9,323 sq. ft. and is elevator-served.

Converted 2-story garage has been reimagined into a 3,689 sq. ft. rear office building – recently updated

Year Built

• 1925

