

BALIWICK OFFICE CAMPUS

***252 W Swamp Road,
Doylestown, PA 18901***

Property Type

- **MEDICAL**
- **OFFICE**

Square Footage

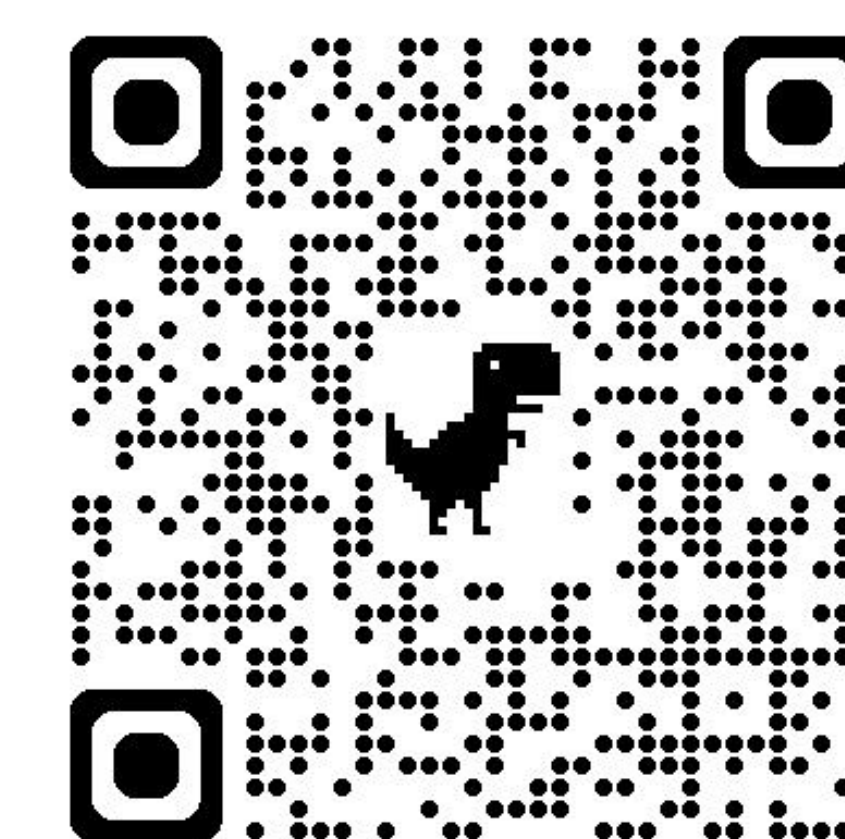
- **2,000 SF**

Year Built

- **1989**

OVERVIEW

Discover a prime opportunity for office or medical buyers in the highly sought-after Baliwick complex, conveniently located in Doylestown Township. This well-maintained professional complex offers an ideal setting for businesses seeking a prestigious address with excellent accessibility and amenities.



@greenstreetpa

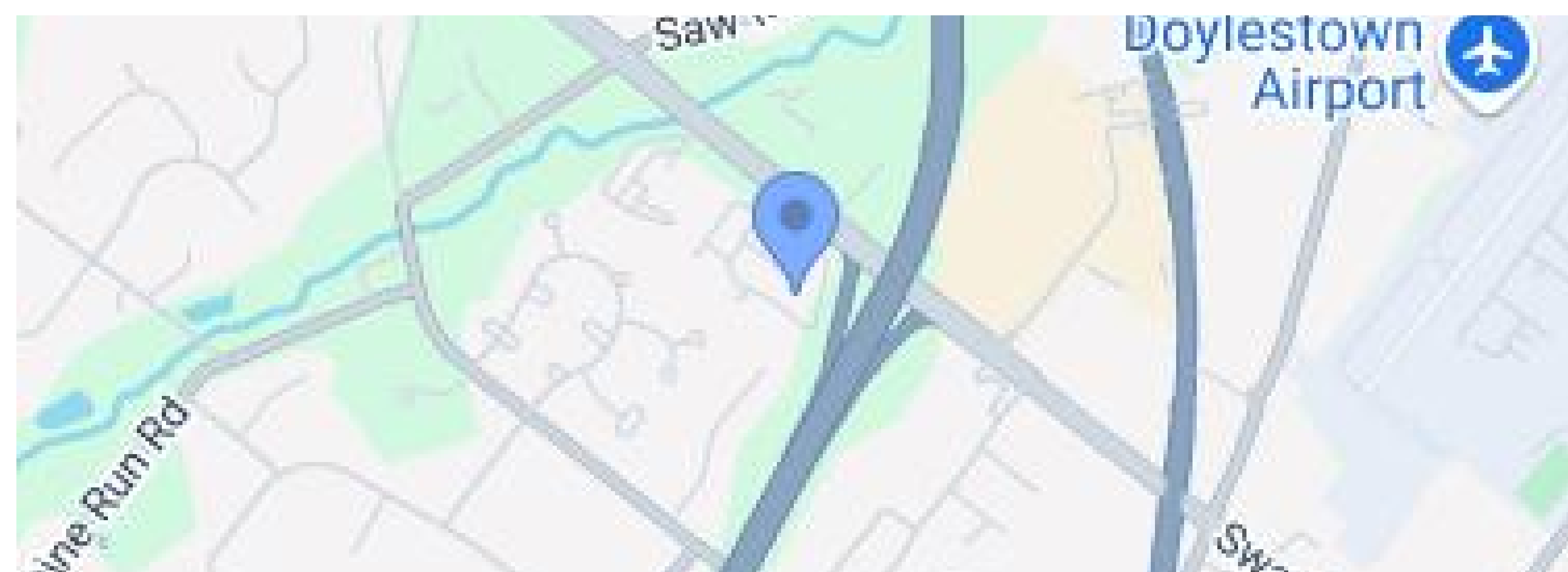
kylie@greenstreetpa.com

PRESENTED BY:

Kylie Miller Bufty
Green Street Real Estate

215.383.0117

GREENSTREETPA.COM



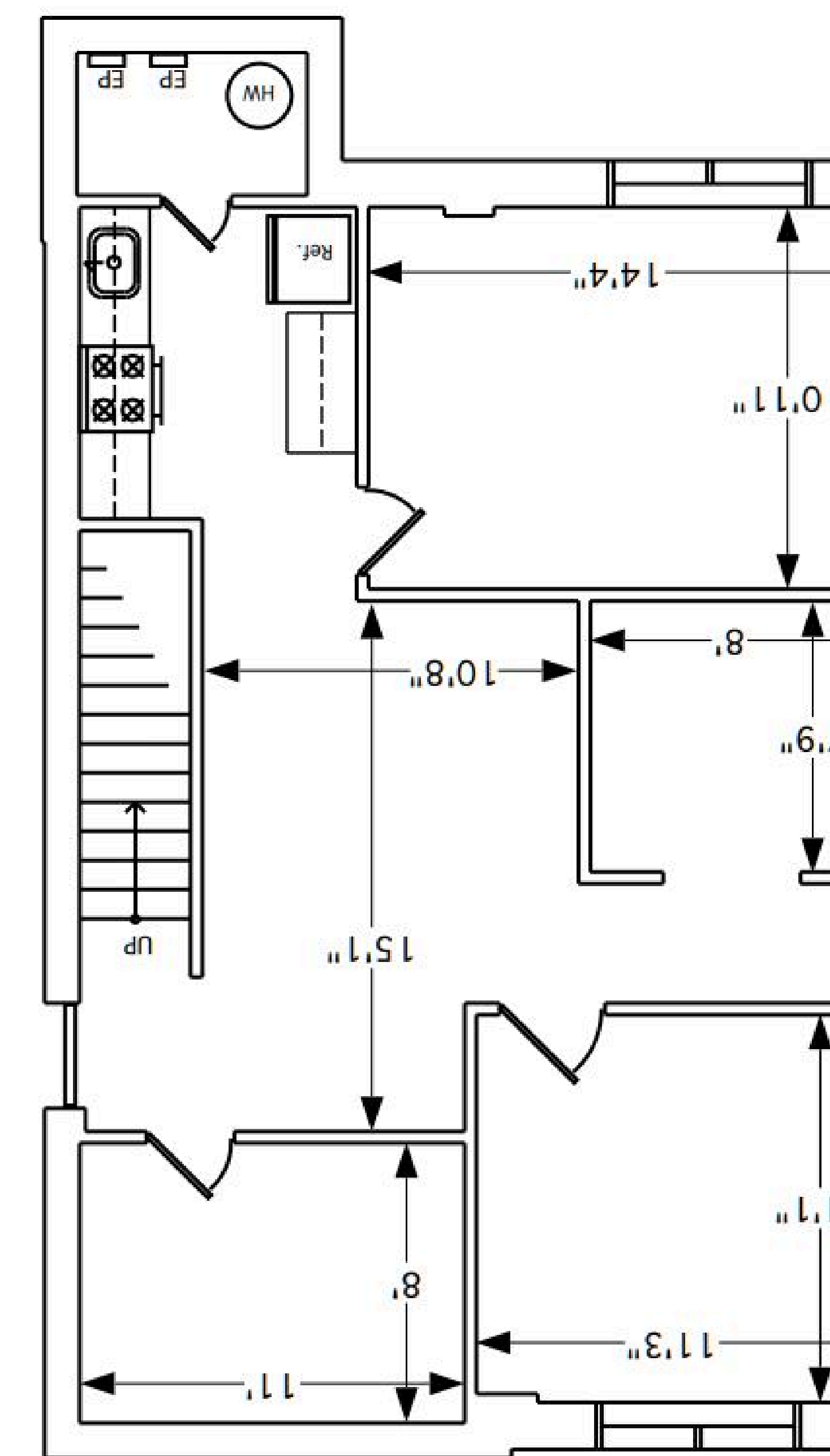
MORE INFO

- Flexible floor plan
- 2 Kitchens
- Ample parking
- ADA accessibility
- Easy access to Routes 611, 202 and downtown Doylestown

Find this information and more on our website at www.greenstreetpa.com

FLOORPLANS

FIRST FLOOR



SECOND FLOOR

